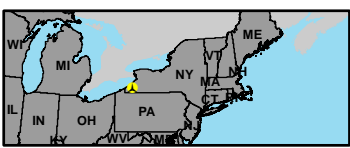
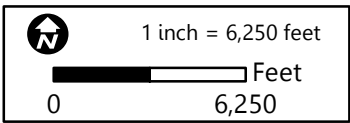
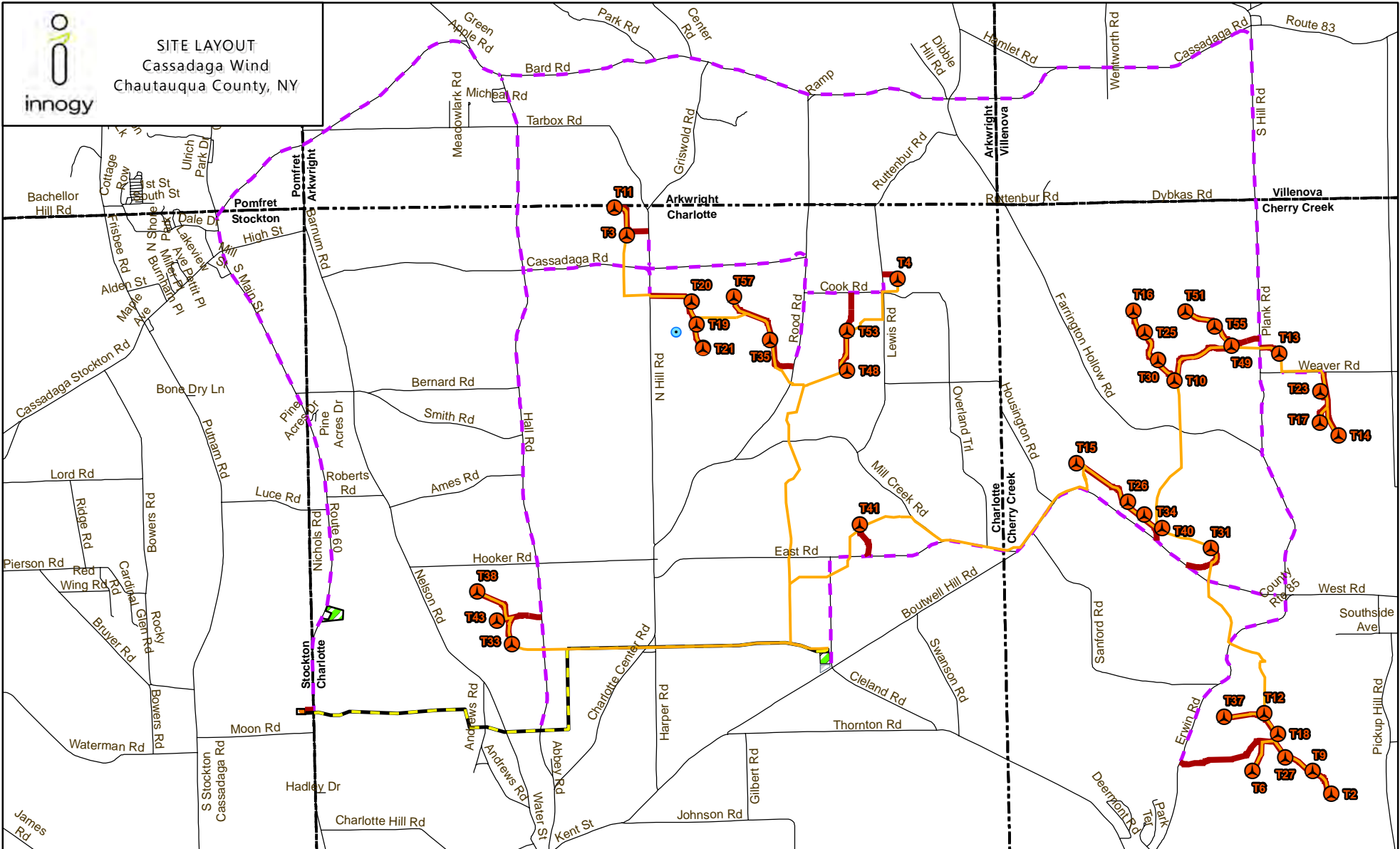




SITE LAYOUT
Cassadaga Wind
Chautauqua County, NY



Project Infrastructure		Existing Infrastructure	
	Turbine		Road
	Permanent Met Tower		Boundary
	Collection		Town
	Generator Lead Line		
	Access Road		
			Delivery Route
			O&M Building
			Laydown Yard
			Collector Substation
			POI Substation

Map created by Innogy Renewables US, LLC on 9/25/2019
Using ESRI ArcGIS Desktop Standard 10.5

Projected Coordinate System:
NAD 1983 UTM Zone 17N

Information on this map is provided for purposes of discussion and visualization only.
Sources:
Innogy, Esri